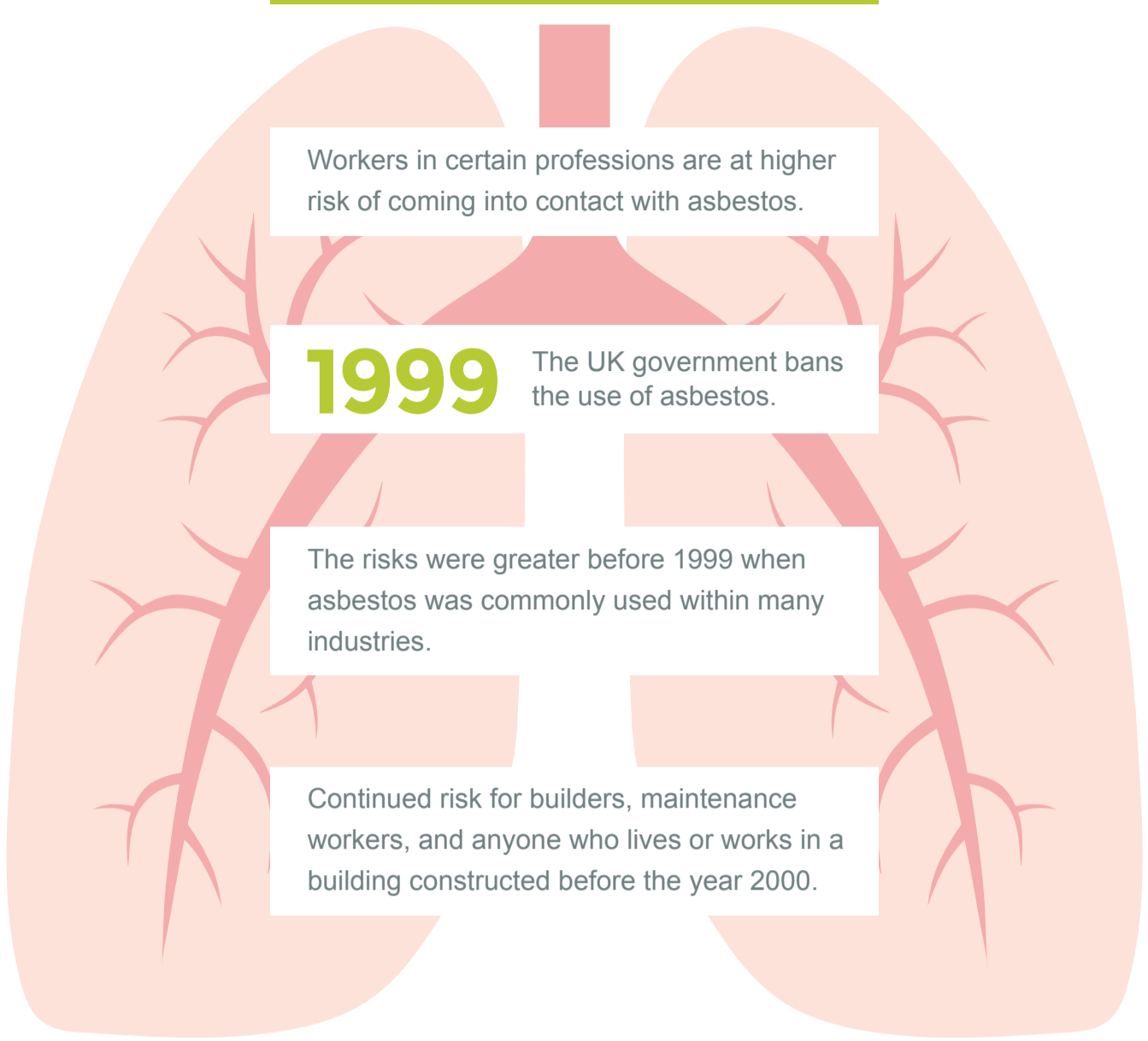


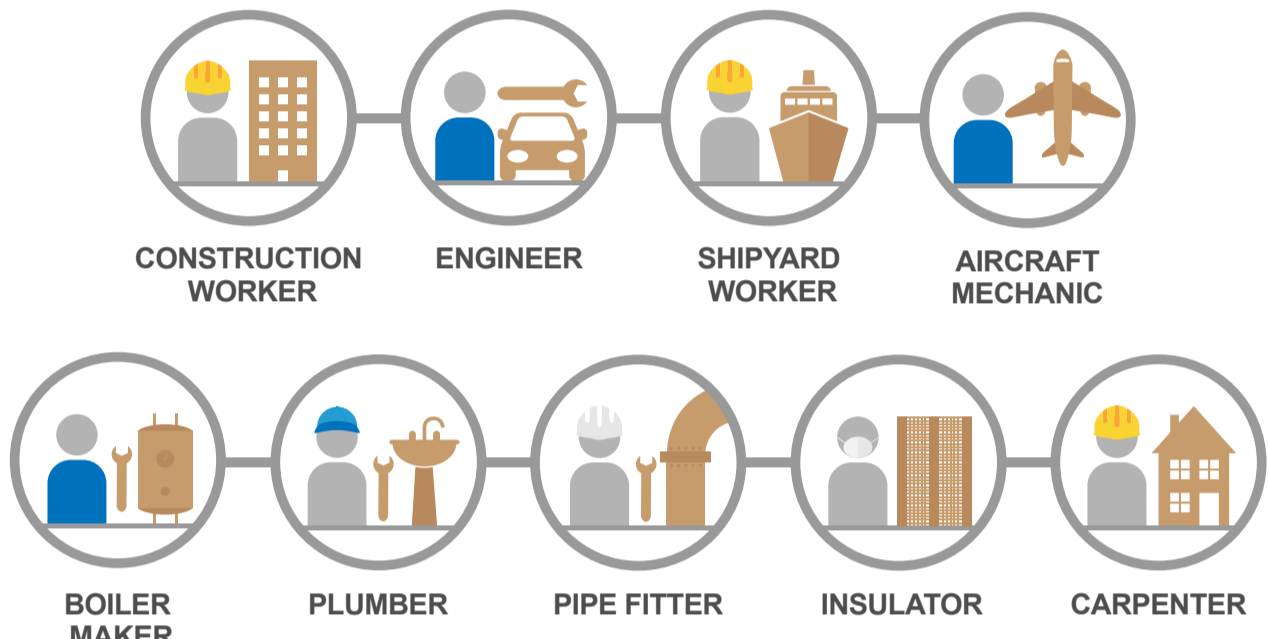
MESOTHELIOMA - WHO IS AT RISK?

Mesothelioma is a cancer which affects the lungs. The primary cause of mesothelioma is exposure to asbestos. The disease often affects people in later life as the illness takes a long time to develop following ingestion of asbestos dust.

WHO IS AT RISK?



WORKERS AT RISK



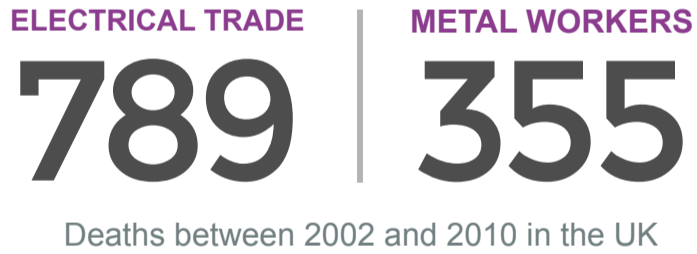
Males are four times more likely to be diagnosed with mesothelioma than females. This may be because, traditionally, more men have worked in the above sectors.



THE FACTS



Health and Safety Executive (HSE) figures collected between 2002 and 2010 recorded **1,811 mesothelioma deaths** among construction workers - marking this profession as having the highest risk of workers developing the disease.



UK RATE OF MESOTHELIOMA DEATHS ARE AMONG THE HIGHEST IN THE WORLD.

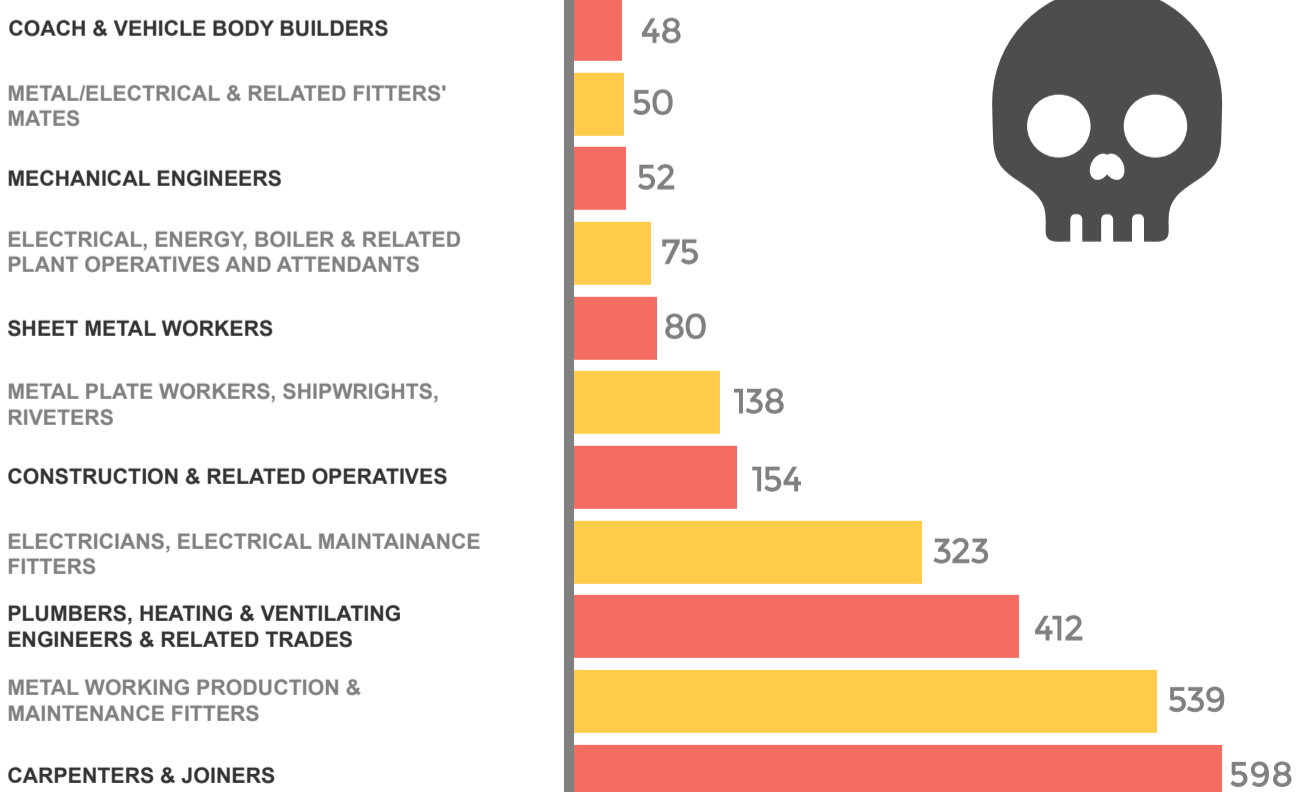


THE NUMBER OF MESOTHELIOMA DEATHS IN THE UK IS RISING AND EXPECTED TO PEAK IN 2020.

HSE DATA COLLECTED BETWEEN 1991 AND 2000

OCCUPATION

DEATHS



If you have developed mesothelioma as a result of occupational exposure to asbestos, you may be entitled to compensation.

For legal advice and to find out more about your rights visit the Asbestos Claims Centre

THIS PDF HAS BEEN CREATED BY ASBESTOS CLAIM CENTRE
[CLICK HERE TO CONTACT A CLAIM SOLICITOR TODAY](#)

AsbestosClaimCentre